

# the design circle



the  
DESIGN  
MUSEUM

spring / summer  
programme 2026



# welcome

Dear friends,

It is my pleasure to share the spring/summer 2026 programme of events for the Design Circle. This season offers fresh opportunities to explore the many ways design shapes the world around us, through an inspiring range of exhibitions, curator-led tours, studio visits and encounters with designers and makers. I hope you find much to enjoy and discover.

We are delighted that *Wes Anderson: The Archives* continues to captivate audiences, receiving rave reviews and building momentum for the museum's wider vision. Looking ahead to May, we are excited to present *NIGO: From Japan with Love*, the first UK exhibition to explore the vision and legacy of the Japanese designer and creative director. Visitors will be immersed in NIGO's world, charting his journey from founding A Bathing Ape in the 1990s to his role as Artistic Director of KENZO. The exhibition brings together the full breadth of his creative output, from fashion and graphic design to his personal collection of vintage objects, Americana ephemera and traditional Japanese craft.

This season also marks an important stage in the development of our New Collection Gallery, set to open in 2029. We are pleased to welcome Sarah Batten as Capital Project Manager and Dr Rebecca Mellor as Curator to work on the project as we embark on the development phase. The major transformation of our permanent gallery will ensure the collection remains dynamic, accessible and reflective of the world we live in.

Beyond the galleries, you can enjoy a programme of exclusive design experiences, including a visit to the Liberty Design Studio and Archive, a day trip to Chichester exploring the Goodwood Art Foundation and Pallant House Gallery, and a studio visit to LABRUM London, one of the designers included in our upcoming exhibition, *The New Black Aesthetic*, opening in November.

As ever, thank you for your generous support. I look forward to welcoming you to the museum this spring and summer.

**Tim Marlow OBE**  
Director and Chief Executive

# spring summer exhibition programme

## Wes Anderson: The Archives

Closes 26 July 2026

Explore Wes Anderson's distinctive cinematic world in the first major retrospective of his work, produced in collaboration with la Cinémathèque française.

This landmark exhibition charts the evolution of Wes Anderson's films from early experiments in the 1990s to recent productions as well as collaborations with key long-standing creative partners.

Over 700 objects have been brought together to showcase the director's meticulous craft of filmmaking through original storyboards, polaroids, sketches, paintings, handwritten notebooks, puppets, miniature models and dozens of costumes.



## NIGO: From Japan with Love

1 May – 4 October 2026

Discover the vision and legacy of Japanese designer and creative director NIGO - from street style to music and beyond, in the first-ever museum retrospective outside of Japan to chart his life and career.

Journey from the back streets of Harajuku, Tokyo, to the global stage, tracing a career that has shaped streetwear, fashion, music and contemporary culture. From founding A Bathing Ape in the 1990s to his current role as Artistic Director of

KENZO, the exhibition explores the ideas, collaborations and cultural references behind some of the most influential brands and designs of recent decades. The exhibition will give visitors a glimpse into NIGO's world, from his own personal collection of vintage clothing and Americana ephemera to his close network of collaborators.

# design circle events



## march

### Curator's Tour

#### Hyakkō: 100+ Makers from Japan

Thursday 26 March

10:00 – 11:00

We are delighted to invite you to Japan House, for a guided tour of *Hyakkō: 100+ Makers from Japan*, an exhibition celebrating contemporary Japanese craft. The exhibition features the work of more than 120 artists, craftspeople and self-taught makers from across Japan. Nearly 2,000 items will be on display, showcasing the breadth of craft techniques from across the country.

Spanning materials including clay, glass, wood, leather and metal, each item bears traces of its maker's surroundings and nods to tradition while quietly incorporating both innovation and self-expression.

Our tour will be led by Simon Wright, Director of Programming, who will share insight into the exhibition's curation and themes.

## april

### Private Tour

#### Sambourne House

Monday 13 April

12:00 – 13:15

You are invited to a private visit to Sambourne House, a rare and beautifully preserved townhouse in the heart of Kensington, which was once the family home of the satirical illustrator, Edward Linley Sambourne.

Now a museum, the house is a striking example of the House Beautiful aesthetic – a 19th-century design approach that treated interiors, furnishings and decorative objects as artworks in their own right.

Throughout the rooms you will encounter original Morris & Co. and Japanese embossed wallpapers, stained glass, richly decorative surfaces and carefully curated collections that reflect Sambourne's passion for craftsmanship and design.

Our tour will be led by Hannah Lund, Curator of Exhibitions and Displays at Leighton House and Sambourne House, who will share insights into the design, decoration and history of this remarkable example of a Victorian family home.





**Design Circle First Look**  
**NIGO: From Japan with Love**  
Wednesday 29 April  
18:15 – 19:00

As a member of the Design Circle, enjoy a first look at our major exhibition, *NIGO: From Japan With Love*. Journey through the visionary world of Japanese designer and creative director NIGO - from the back streets of Harajuku to the global stage - in the first UK museum retrospective charting his multifaceted career.

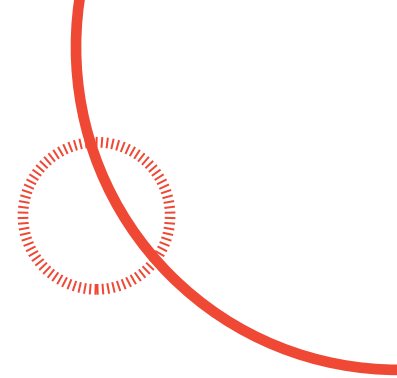
Working across street style, fashion, music and more, NIGO has shaped influential designs and cultural movements for over 30 years, from founding A Bathing Ape to his current role as Artistic Director of KENZO.

The exhibition brings together pieces from his own personal collection alongside objects that illuminate his wide-ranging impact on design and culture.

Join us before the full exhibition opening reception for the chance to see the show before anyone else. Exhibition Curator, Esme Hawes, will provide a guided tour of the exhibition and will be on hand to offer key insights.

**Opening Reception**  
**NIGO: From Japan with Love**  
Wednesday 29 April  
19:00 – 21:30

Join us for the official opening reception, hosted by museum Director and Chief Executive, Tim Marlow, to celebrate the opening of *NIGO: From Japan with Love*.



## june

### Private Tour

#### Liberty Design Studio

Friday 5 June

10:00 – 11:30

Join us for a visit to Liberty on Regent Street, where we will enjoy exclusive behind-the-scenes access to the design studio and archive. Founded in 1875 by Arthur Lasenby Liberty, the store quickly established a reputation for its distinctive textiles and decorative arts, becoming one of Britain's most recognisable and influential brands. Housed within its iconic Tudor-style building, the in-house design studio is home to a team of highly skilled artists and

designers who reinterpret and meticulously hand-draw artworks to produce hundreds of new designs each year. During our visit, we will explore Liberty's rich heritage and gain insight into its creative process through a guided tour of the studio and archive led by Design Director Mary-Ann Dunkley, discovering more about the celebrated designs that continue to define this much-loved brand.



### Day Trip

#### Goodwood Art Foundation and Pallant House Gallery

Monday 15 June

We invite you to spend the day with us in Chichester, where we will visit Goodwood Art Foundation and Pallant House Gallery.

Set within the landscaped grounds of The Goodwood Estate, and opened in 2025, the Foundation features the work of internationally acclaimed artists set amid a natural landscape, offering an inspiring and enriching experience for visitors. During our visit, we will explore the first major UK exhibition of land artist Nancy Holt and explore the beautiful surrounding landscape. We will enjoy lunch on site at Café 24, which offers a seasonal small plates menu using fresh local ingredients.

After lunch, we will travel into Chichester to Pallant House Gallery. Here, we will enjoy an exclusive curator-led tour of their landmark exhibition, *British Landscapes: A Sense of Place*, which will feature works by Barbara Hepworth, Paul Nash, Eric Ravilious and many others. We will then have some time to explore the gallery's permanent collection, which takes visitors on a journey through Modern British art, from the early 20th century up until the present day.

Tim Marlow, Chief Executive and Director, will be joining us. This visit will incur an additional cost, we look forward to sharing the cost and details in due course. In the meantime, please register your interest with the team.



## Private Tour

### Future Observatory: The Stone Demonstrator

Thursday 25 June  
18:00 – 19:00

We are delighted to invite you to explore The Stone Demonstrator, a boundary-pushing stone prototype, located on the Earl's Court development site. Designed by architecture practice Groupwork with engineers Webb Yates and Arup and funded by Future Observatory and the UKRI Arts and Humanities Research Council (AHRC), the project serves as both a research tool and a call to action for the construction industry.

Nearly 40% of global carbon emissions are created by the built environment, with 11% coming from the construction of new buildings. The Stone Demonstrator proposes a new way to build, reducing carbon emissions compared to conventional reinforced concrete and steel frames.

Alongside the Stone Demonstrator prototype, Future Observatory has funded engineers at University College London to develop guidance for designing stone structures.

Justin McGuirk, Director of Future Observatory, will discuss the project and its research. Join us for drinks afterwards at our partner hotel, Templeton Garden, for reflection and conversation about sustainable architecture.



## july

### Studio Visit

#### LABRUM London

Thursday 16 July  
18:30 – 19:30

Explore the studio of LABRUM London, the award-winning fashion brand founded by designer Foday Dumbuya. Winner of the prestigious Queen Elizabeth II Award for British Design in 2023, the menswear label blends West African heritage with British tailoring, creating small batch collections which explore the history, cultures and stories of the African diaspora.

LABRUM London has collaborated with major brands including Guinness, John Lewis and the Tupac Estate.

Most notably, the label collaborated with Adidas in 2024 to design Arsenal football club's away kit with the partnership featuring in a London Fashion Week show at Emirates stadium.

During our visit, we will go behind the scenes and gain an insight into Foday's design processes and inspiration. His work will be featured in our upcoming exhibition, *The New Black Aesthetic*, opening in November, which celebrates the creativity and impact of contemporary Black designers.



# a message from the Curator of the New Collection Gallery



I'm thrilled to be joining the Design Museum during such an exciting moment of transition and reflection. As we approach our 10th anniversary in the former Commonwealth Institute building this year and look ahead to celebrating 40 years since the museum's founding in Shad Thames in 2029, we have a remarkable opportunity to reimagine how we share the stories within our collection.

I come to this role from the Science Museum, where I served as Curator of Art and Visual Culture and was part of the exhibitions curatorial team. Throughout my career, collections have been at the heart of my work—they are truly the heartbeat of any museum. As museum professionals, we hold objects and archives in trust for our communities, using them to celebrate, challenge, and explore the rich complexities of our past while envisioning hopeful futures.

Last year, we secured development funding from the National Heritage Lottery Fund to support the preservation and sharing of our collection through the New Collection Gallery (working title!). This new space will explore design's role in helping humanity, society, and our planet thrive. While we're still in the early stages and building our team, one narrative we're particularly passionate about is the green transition and design's power to drive innovation and inspire hope. We aim to set a new benchmark for low-carbon exhibition design and collection care while championing designers tackling the climate crisis.

Across the museum sector, only a small percentage of collections are typically on display. We're exploring innovative ways to make more of our objects accessible and regularly highlight new stories—showcasing beloved favourites alongside pieces never before displayed.

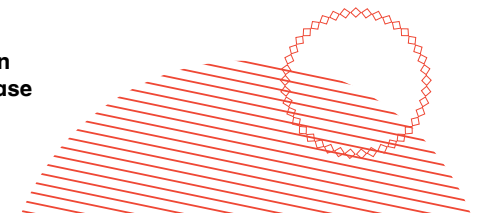
The collection has grown during Designer Maker User's lifetime largely through our dynamic exhibition programme, acquiring iconic objects ranging from Gilbert Baker's rainbow flag to a 1959 Number 1 Barbie. A commissioned remake from one of fashion's hottest designers will soon be on display in *The New Black Aesthetic* before joining our collection. Our goal is for the New Collection Gallery to showcase the extraordinary range of talents and ideas in contemporary design for years to come.

Central to everything we do as a team is our commitment to making the collection and the story of design accessible, inclusive, and meaningful to the communities we serve. Collaboration is fundamental—we're consulting with diverse communities and people with lived experience to bring the space and our objects alive for all visitors.

On behalf of the New Collection Gallery team, thank you for your support as we embark on this exciting project. I look forward to learning about your own memories and experiences of design, and to sharing the thought-provoking and inspiring stories we're rediscovering within our collection.

**Dr Rebecca Mellor**  
Curator

To hear more about the New Collection Gallery and how you can support, please contact [patrons@designmuseum.org](mailto:patrons@designmuseum.org)





## art & design fairs

Design Circle members have the opportunity to receive tickets and VIP access to a number of the world's most prestigious art and design fairs both nationally and internationally. Please register your interest early by contacting the Design Circle team.

**PAD Paris**  
8 – 12 April 2026

**Frieze New York**  
13 – 17 May 2026

**Design Miami/Basel**  
9 – 14 June 2026

**Homo Faber**  
1 – 30 September 2026  
(Fellows and Benefactors only)

**PAD London**  
13 – 18 October 2026

**Frieze London**  
14 – 18 October 2026

### Image Credits

Cover NIGO photographed at the Design Museum. Photo credit Elliot James Kennedy **P2** © Richard Heald **P4** Wes Anderson: The Archives © Matt Alexander/PA Media Assignments **P5** NIGO photographed at the Design Museum. Photo credit Elliot James Kennedy **P6** © Jérémie Souteyrat **P7** Sambourne House © Royal Borough of Kensington and Chelsea, image courtesy of Jaron James **P8** HUMAN MADE Hariko Decay Ducks, featuring in NIGO: From Japan with Love at the Design Museum. Photo courtesy of NIGO **P9** BAPE Varsity Jacket, featuring in NIGO: From Japan with Love at the Design Museum. Photo courtesy of NIGO **P11** © Liberty **P13** Toby Adamson, Courtesy Goodwood Art Foundation **P14** © Bas Princen **P15** Courtesy of LABRUM **P18** Artist Plate Project, Frieze New York 2025. Photo by Casey Kelbaugh. Courtesy of Frieze **P19** Nancy Hitzig, photo by Ray Malone Photography

## Design Circle giving levels

We have three levels of support within the Design Circle; Benefactor, Fellow, Patron. Everyone who joins the Design Circle makes a vital contribution to the museum's work, and your ongoing support is hugely appreciated.

We are a growing community of like-minded individuals and we're always delighted to welcome new friends on board. If you know someone who might enjoy being part of the Design Circle, do invite them along to an event as your guest to find out more.

**Design Benefactor**  
£10,000  
(£800 benefit, plus £9,200 voluntary donation)

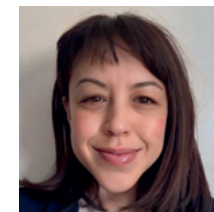
Membership as a Benefactor offers you the opportunity to build a close relationship with the museum, with exclusive access to private events and specially organised trips in addition to everything we offer our Fellows. You will also have the chance to have your support for the museum recognised against an exhibition or programme of your choice, where possible.



**Nancy Hitzig**  
Director of Development and Strategic Partnerships  
nancy.hitzig@designmuseum.org



**Stefanie Woodford**  
Head of Philanthropy  
stefanie.woodford@designmuseum.org



**Nia Aronoffsky**  
Senior Philanthropy Manager  
nia.aronoffsky@designmuseum.org



**Sarah Fitzpatrick**  
Philanthropy Executive  
sarah.fitzpatrick@designmuseum.org

**Design Fellow**  
£5,000  
(£400 benefit, plus £4,600 voluntary donation)

Membership as a Fellow offers a more exclusive level of access to the museum and its team. Enjoy tours of private collections, access to international trips with the Director and the chance to spend time with some of the most creative designers and architects in the world.

**Design Patron**  
£1,000  
(£200 benefit, plus £800 voluntary donation)

Membership as a Patron offers behind-the-scenes access to the museum and to events such as curator-led tours, talks and studio visits.

Thank you for your support.

To book your place at a Design Circle event  
or to register your interest, please contact us:

**[patrons@designmuseum.org](mailto:patrons@designmuseum.org)**

**the Design Circle**